

TORQUE WRENCH TESTING MACHINE

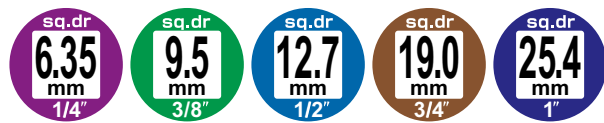
Calibration Certificate Included

Test Report

Traceability Chart

A tool for torque wrench's check that comes with LED indicator and 3 modes available (Peak / Track / Peak Hold).

Conversion adapter and hexagon adapter are included for various square drives and adjustable type wrenches.



How to use video
<http://youtu.be/sp-iRroH2FM>



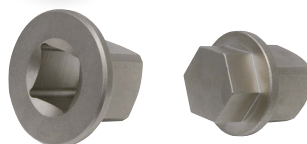
TTC-60



TTC-500



TTC-1000



Conversion Adaptor Convex Adaptor (6pt)

Example



Models	Torque Range (N·m)	Min. display (N·m)	Increment (N·m)	Dimensions (mm)			Method for measurement	Accuracy (%)	Weight (kg)
				S	D	L			
TTC-60	2 ~ 60	0.00 ~	0.01	12.7	30.0	155	Clockwise	± 1% + 1 increment	2.2
TTC-500	20 ~ 500	0.0 ~	0.1	25.4	48.0	173			2.6
TTC-1000	50 ~ 1000	0.0 ~	0.1	25.4	48.0	173			2.8

※ Adapter and AC adapter are not included in the weight.

- Voltage : 100V - 240V
- Operating Temperature : 5 °C - 40 °C
- Storage Temperature : -20 °C - 70 °C
- Measurement Mode : Peak mode/Track mode/Peak hold mode



Accessory

○ Adaptor (1pc each)

TTC-60 : concave6.35mm X convex12.7mm (CA0204), concave9.5mm X convex12.7mm (CA0304)
TTC-500, TTC-1000: concave9.5mm X convex25.4mm (CA0308), concave12.7mm X convex25.4mm (CA0408),
concave19.0mm X convex25.4mm (CA0608)

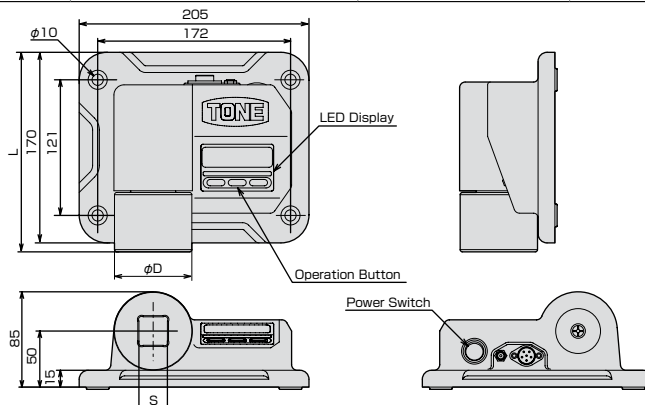
○ Convex Adaptor (1pc each)

TTC-60 : convex19mm X convex12.7mm (MA4-19), convex27mm X convex12.7mm (MA4-27)
TTC-500, TTC-1000: convex27mm X convex25.4mm (MA8-27), convex38mm X convex25.4mm (MA8-38)

○ AC adaptor 100V-240V/50-60Hz

○ Fixing Bolt : M10 X 40 Cap Bolt (with Washer, Nut) 4

○ Instruction Manual ○ Calibration Certificate W/H Traceability



Repair・Maintenance

- Inaccuracy may occur if not used for a long time or improprie use of tool. Please contact your distributor regularly for accuracy check.
- Please contact your distributor in case of experiencing tool malfunction (no clicking sound, slight force, etc.)

- Torque devices require regular inspection (once a year or 10,000 times afterwards). Checking service is available with service charge.
- For more information about tool handling, please contact your distributor.
- Accuracy range after repair will be ± 4%.

LED Display

- Easy reading with LED display.

High Accuracy

- Accuracy: ±1% + 1 increment

Easy Operation

- Easy to operate by power switch and three buttons.

3 Modes Available

Track Mode

The value will updated realtime according to the current torque value. Zero will be displayed when the load is stopped.

Peak Mode

After setting the time in advance (1/2/4/8 seconds), the value will be reset automatically according to the setting.

Peak Hold

After measurement, the measured torque will continue to be displayed until the button is pressed.

