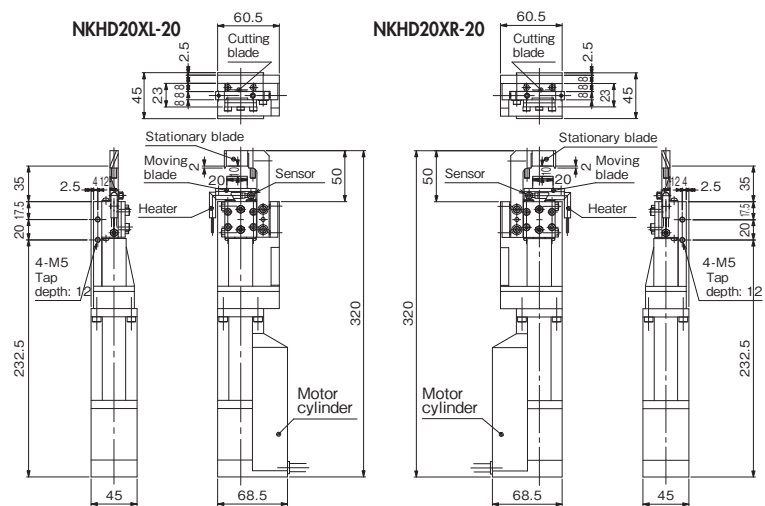


**No. NKHD20XL-20/NKHD20XR-20 Servo Heat Nipper (With Motor Cylinder) Compact type NEW**

- Blade travel distance and speed can be easily programmed.
- Servo motor ensures delicate blade feeding and quiet gate cutting.
- Improved durability of blades with high speed chip brazed.
- Easier blade replacement than conventional models; take out the blade unit and exchange with the new one.



Model No.	Cutting Capacity width x thickness φ (mm) Acril	Blade Edge Temp. (MAX °C)	Blade Opening (mm)	Cutting Blade Effective (mm)	Max. Thrust (N)	Max. Speed (mm/s)	Positioning Points (pts)	Power Supply Voltage	Current consumption power	Weight (kg)	EDP No.
NKHD20XL-20 NKHD20XR-20	10×1.5	180	10	20	100	400	16	24VDC±10%	2.0A	1.57	—

\*The above weight is the product only. The weight of heater and sensor is not included. \*A heater for 200V AC, 220V AC, and 240V AC respectively can be made-to-order.  
\*The following specifications can be made on request: change in blade length; replacement of cylinder for improvement in performance; additional KINECHECK which does not require a hydro converter (oil).  
•Accessory heater: HTL-28.5-6.25-300L-80W1H(80W/100V AC) Recommended operating temperature 140°C, Cord length 300mm, Weight 13g  
•Accessory temperature sensor: SNO-300L-H(K thermocouple), Recommended operating temperature 140°C, Cord length 300mm, Weight 7g

**Option Parts**    •Temp. controller ( DTC-001)   •Power supply   •Heater code   •Parallel cable   •ADP cable   •Controller ( CTC-33)   •Power cord   •Sensor cord  
For the options noted above, contact us because required items or the numbers of them may change depending on the installation method,  
use details, etc. of servo heat nippers.

HAND TOOLS

BITS & SOCKETS

ELECTRIC TOOLS

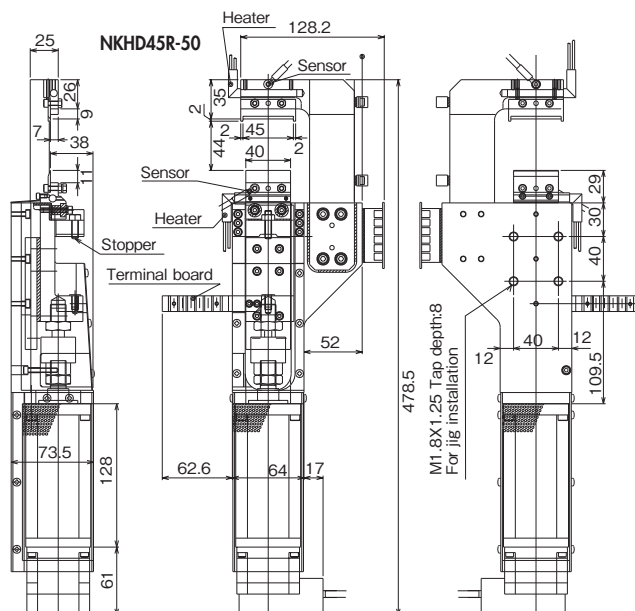
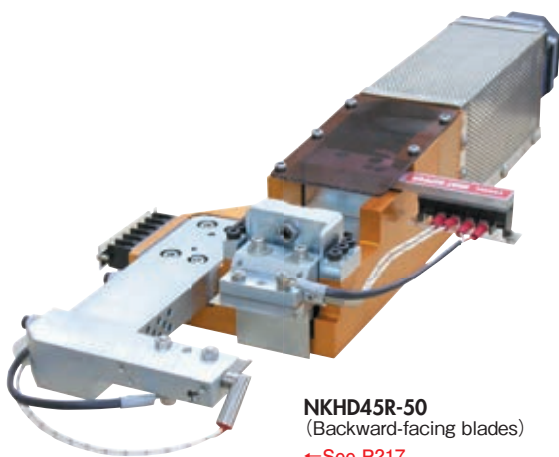
AIR TOOLS

STATIC SOLUTIONS

GASOLINE ENGINE TOOLS

## No. NKHD45R-50 Servo Heat Nippers (With Motor Cylinder)

- Blade travel distance and speed can be easily programmed.
- Servo motor control enables delicate blade feeding and quiet gate cutting performance.



Model No.	Cutting Capacity width x thickness φ (mm) Acrl	Blade Edge Temp. (MAX °C)	Blade Opening (mm)	Cutting Blade Effective (mm)	Max. Thrust (N)	Max. Speed (mm/s)	Positioning Points (pts)	Power Supply Voltage	Current Consumption Power Control circuit	Weight (kg)	EDP No.
NKHD45R-50	24×1.2	180	46	40	500	100	16	24VDC±10%	3.0A 0.2A	5	—

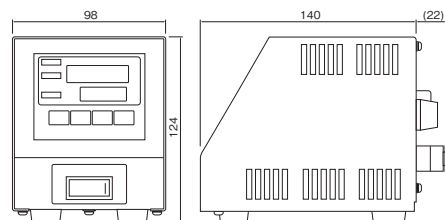
※A heater for 200V AC, 220V AC, and 240V AC respectively can be made-to-order.  
 ・Accessory heater: Recommended operating temperature 140°C  
 ・Accessory temperature sensor: Recommended operating temperature 140°C

### Option Parts

・Temp. controller (DTC-001) ・Power supply ・Heater code ・Parallel cable ・ADP cable ・Controller (CTC-33) ・Power cord ・Sensor cord  
 For the options noted above, contact us because required items or the numbers of them may change depending on the installation method, use details, etc. of servo heat nippers.

## No. DTC-001 Benchtop Temperature Controller

- The heating element can be connected directly to the main unit, a useful feature that saves labor during wiring installation.
- Compact construction enables the unit to be easily carried, allowing for changing the work site at any time.



Please inform us of the model No. of the heat nipper when placing an order.

Model No.	Temperature range Thermocouple K (°C)	Power supply (VAC)	Power consumption (with 100 VAC input)	Operating ambient temperature/humidity (°C) / (%)	Protection fuse	Weight (g)	EDP No.
DTC-001	0~200	100~240	Approx. 3W (Approx. 5VA) (With no load)	0~40 RH35~85%(No condensing)	One 15A fuse is incorporated.	900	—

※Please ensure the input voltage in prior to operation as it is directly connected to the heater.  
 ※Two types of heaters are available for 100V and 240V.

### Option Parts

・ Power supply cable : Model No. DTC-001-□□

- : Cable for connection to the terminal block is necessary to be included.  
 □: (N/A) Cable not necessary.
- : 2m power cable w/Japanese type plug (A-type)  
 □: 2m power cable w/European type plug (C-type)  
 □: (N/A) Cable not necessary.