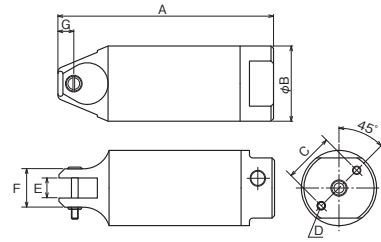


No. GT-NR3/5/7/10L/20/30/50 Air Nipper Round-Type without Lever

- The position of air intake port is 180-degree rotatable.
- Two air intake ports are provided, so they can be switched depending on the mounting place.



Reference

Capacity ϕ (mm)				Model No.	Size (mm)								Air Consumption (ml/str.)	Air Pressure (MPa)	Weight (g)	Hose coupling	EDP No.
Soft Plastic	Hard Plastic	Copper	Steel		A	B	C	D	E	F	G						
2.0	1.0	0.5		GT-NR3	110	23	17	M3 Depth8	7	14	7	45	0.4~0.5	70	Rc 1/8	360015	
2.0	1.0	0.5		GT-NR5	94	30	20	M4 Depth10	7	17	7	64	0.4~0.5	110		360016	
3.0	2.0	1.6	1.0	GT-NR7	113	34	22	M4 Depth10	9	17	7	116	0.4~0.5	150		360017	
4.0	2.6	1.8	1.2	GT-NR10L	113	36	24	M4 Depth10	12	20	7	116	0.5~0.6	215		360018	
7.0	5.0	2.6	2.0	GT-NR20	129	45	30	M5 Depth12	12	23	9.5	230	0.5~0.6	280		360019	
10.0	6.5	3.3	2.8	GT-NR30	165	56	40	M6 Depth12	17	30	10.5	584	0.5~0.6	505	360020		
12.0	6.5	5.5	4.5	GT-NR50	222	75	50	M8 Depth12	25.2	43	15	1,170	0.5~0.6	1,190	Rc 1/4	360024	

*The capacity in the above table is given for reference, when mounting a standard type of blade.
The capacity depends on the blade shape and the material of the object to cut.
*Air hose inner dia.: 5mm *Overall length and Weight: Accessories not included.

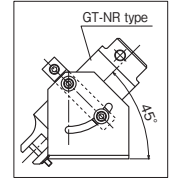
*Before mounting on dedicated/automatic machines, check the following product dimensions.
(Flame O.D., screw dia., screw to screw) dimensions, etc.)
*Capacity (ϕ) is for reference purpose only, it varies depending on products.

No. NR10LST/20ST/30ST/50ST Stand for GT-NR

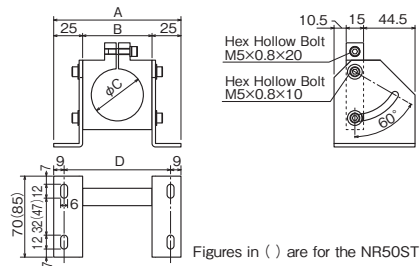
- Fixing hardware for sprue cutting of direct gates or mounting to an automatic machine.
- Mounted angle can be adjusted (0 to 60°).



Mounting example



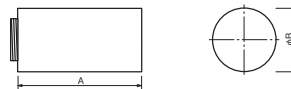
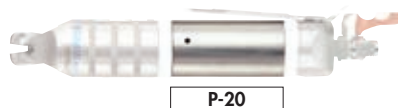
Model No.	Size (mm)				Weight (g)	EDP No.
	A	B	C	D		
NR10LST	102	52	36	84	335	360057
NR20ST	110	60	45	92	385	360058
NR30ST	130	80	56	112	535	360059
NR50ST	150	100	75	132	835	—



Figures in () are for the NR50ST

No. P-10L/20/30/50 Extra Pressure Boosters

- This unit is to be used in case the originally required pressure is not obtainable by the limit of space and air pressure.



Reference

Capacity ϕ (mm)				Applicable models	Model No.	Size (mm)		Air Consumption (ml/str.)	Air Pressure (MPa)	Weight (g)	EDP No.
Soft Plastic	Hard Plastic	Copper	Steel			A	B				
5.0	4.0	2.6	1.6	NS10L, NR10L, N12	P-10L	71	36	223	Up to 0.5MPa	115	360051
8.0	6.0	3.0	2.2	N20, NS20, NR20	P-20	87	45	508	Up to 0.5MPa	215	360052
13.0	7.0	4.8	4.0	N30, NS30, NR30	P-30	92	56	956	Up to 0.5MPa	330	360053
6.5	5.5			N50, NR50	P-50	133	75	2,670	Up to 0.5MPa	840	360054

*The capacity in the above table is given for reference, when mounting a standard type of blade. The capacity depends on the blade shape and the material of the object to cut.
*Above figures of overall length and the weight are defined for the extra booster specs only. And these figures in the installation.

※Blades are optional.