

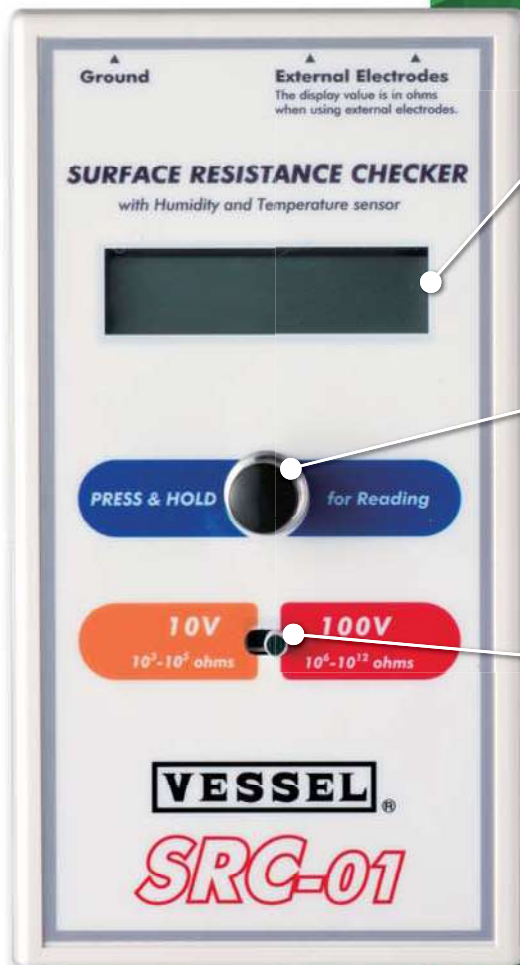
Compliant with IEC61340-4-1

Easy to check the surface resistance of floor mat

All necessary for 4 types of measurement in one package.

**NEW****STAT·CLEAN****SRC-01**

Easy to check surface resistance of floor or mat



● Temperature and humidity are measurable

This product can also measure temperature/humidity at the same time as a surface resistivity value.
(The value of the temperature or humidity is for reference.
The accuracy is not assured.)

● Easy measurement

Press long the measurement button switch, and then the measured value is shown on the display.
Auto-off function is available to reduce the battery drain.
(Taking hands off the switch, the power is off in 20 seconds.)

● Wide measurement range for the resistance value

The applied voltage selector enables to measure the resistance for the range of (1) 1.0×10^3 to $1.0 \times 10^5 \Omega$ at 10V position and (2) 1.0×10^6 to $1.0 \times 10^{12} \Omega$ at 100V position.

● A slim and compact body

The body weight is 340g, including one 006P square-type battery.

Detail of the package

● With a carrying case

Useful to carry all necessary items for measurement

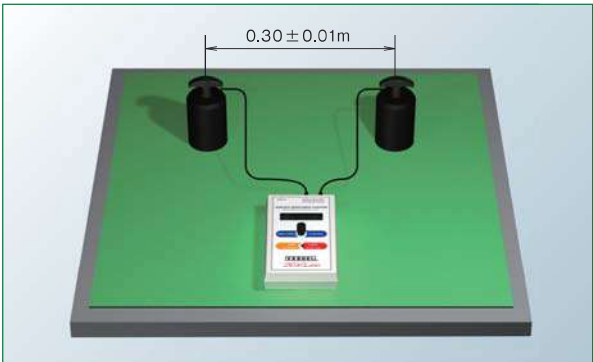
● With probes

Probes based on the IEC 61340-4-1 standard are included, and can measure point-to-point resistance, resistance to ground, and volume resistance. The body is also enough on its own to measure surface resistivity as this is with a parallel electrode on the backside. (Parallel electrode of the main body back side)



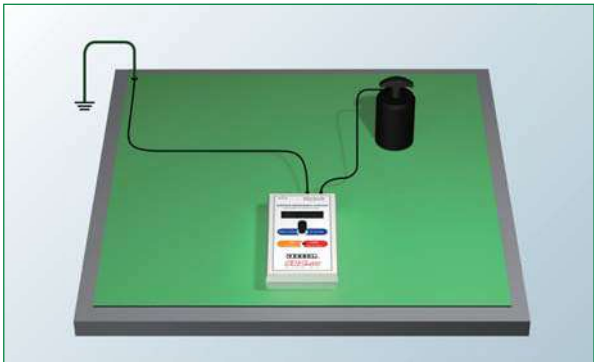
All-in-one package for various purposes.

The following 4 types of measurement can be performed.



Resistance between 2 points on a surface

Surface resistance between two points on mats, floors, etc. can be measured.



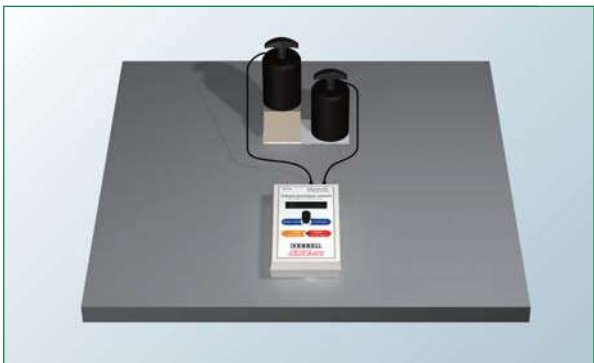
Resistance between a ground and a connecting point by a probe on a surface

Surface resistance between the electrode and the ground point of a mat, floor, etc. can be measured.



Surface resistivity

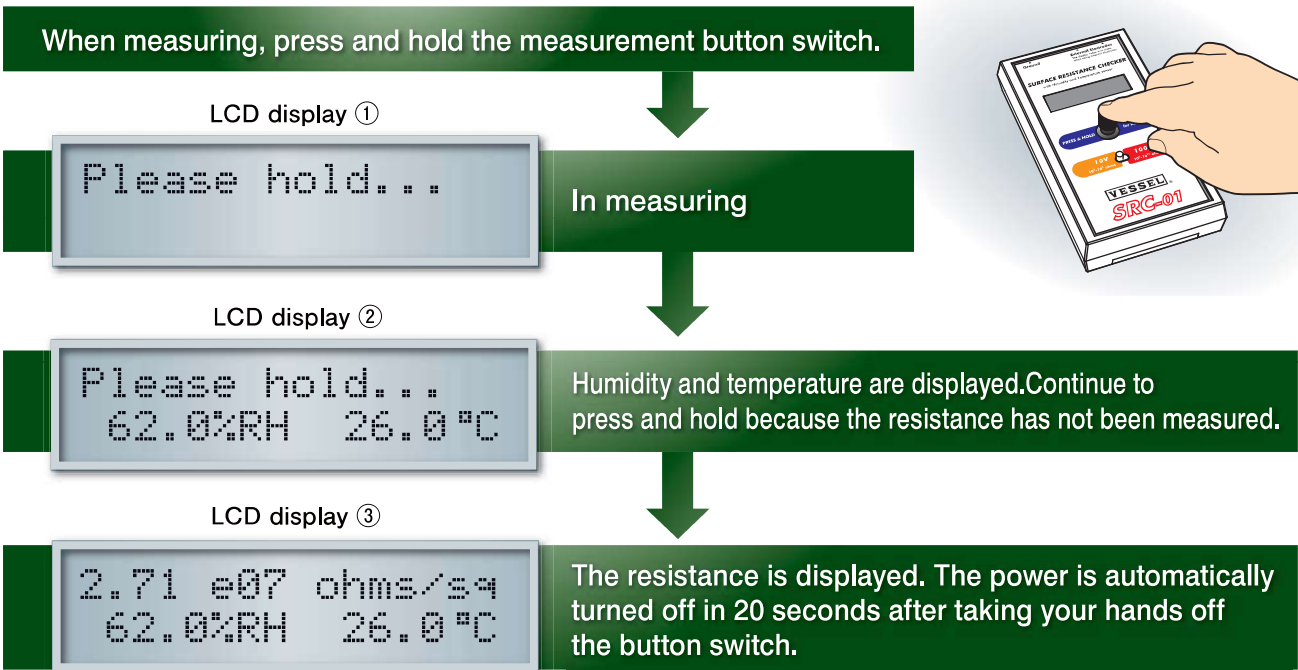
Surface resistivity of mats, floors, etc. can be measured.



Volume resistance

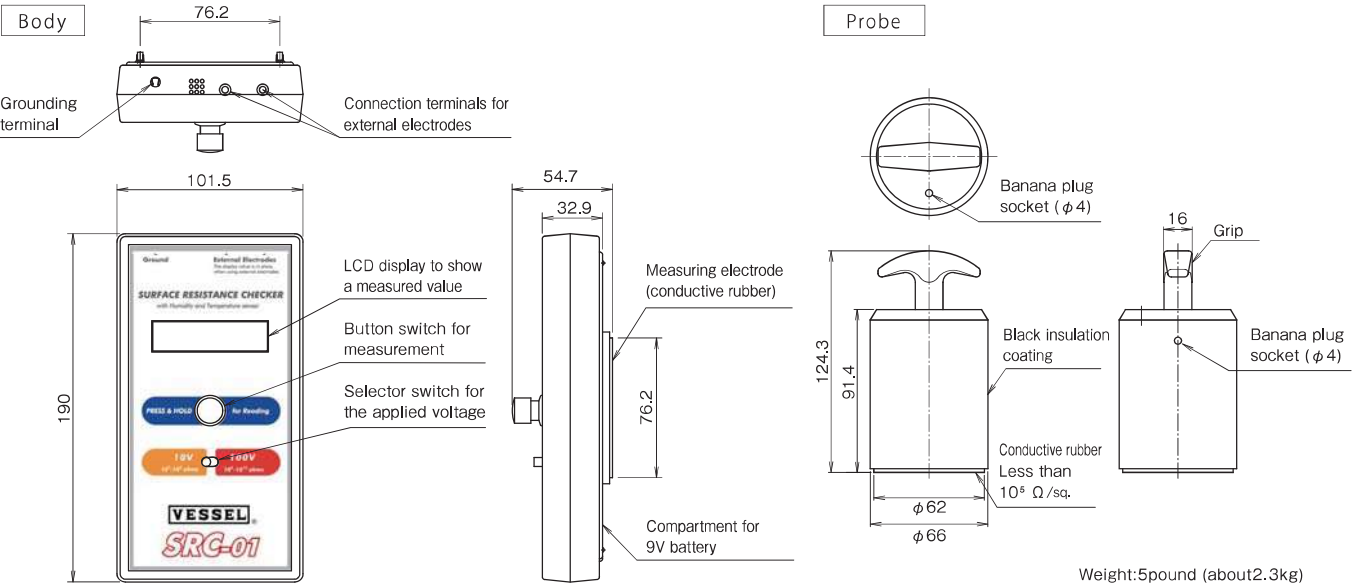
Volume resistance of chairs, desks, etc. can be measured.

Detail of the display



※ The measurement may take ten seconds or more depending on the resistance value.

Dimensions and part names



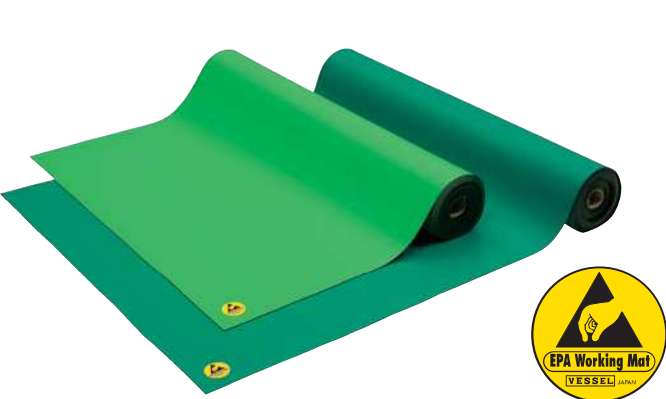
Specifications

Conformity standards	IEC61340-4-1, JIS-C2170	Accessories	Probe (outer diameter: about Φ66 mm, about 2,3 kg): 2
Measurement range	10 ³ ~10 ¹² Ω (Ω/sq.)		Curled cord for a body earth (banana plugs at both ends): 1
Applied voltage	10V (R<1.0×10 ⁶ Ω or Ω/sq.) , 100V (R≥1.0×10 ⁶ Ω or Ω/sq.)		Curled cord for measurement for the point-to-point resistance and resistance to ground (banana plug/mono plug): 2
Display	Triple-digit LCD (□.□□ e□□) ex.: 3.14 e10 → 3.14×10 ¹⁰		Crocodile clip: 1, Large crocodile clip: 1
Power source	9V battery × 1 (Type: 006P, recommended alkaline battery)		Stainless plate (185 mm x 100 mm): 1
L×W×D	190 (L)× 101.5 (W) × 54.7 (H) [mm]		Stainless plate: 1
Weight	Body: around 340g (including a battery), gross weight: around 6.2kg (including the carrying case)		Carrying case: 1
Operating temperature and humidity	0℃~37℃, 10%~90%RH		9V battery (006P type: manganese dry battery): 1
Material	Body case: ABS resin		*The accompanying battery is a sample. It may have run down soon after purchase. Thank you for getting a new battery by yourself.
			Manuals

*The indication (Ω/□) in the above table is shown as (Ω/sq) in the checker display. *An inspection report and a calibration certificate available as option. Please consult us for more detail.

EPA Working Mat • Conductive Rubber Mat

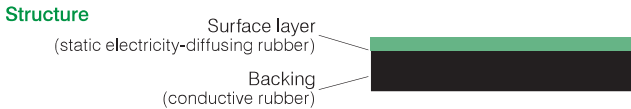
Controlling electroconductivity to 10⁶Ω or more 10⁷Ω or less without influence from the working environment Ideal for workbenches requiring static electricity measures on backing



10m ROLL **LG-100** EDP No.:621464
SG-100 EDP No.:621461

- ▶ Offers uniform, consistent conductive performance.
- ▶ Features a matte surface finish, reducing reflections and helping prevent eye fatigue prevention.
- ▶ Heat resistant to dropping solder.

Applications	Conductivity	Material	Directive
Designed for use with work benches	10 ⁶ ≤R≤10 ⁷ Ω	NBR+SBR	EPA RoHS



Common Specifications			
Model No.	LG-100	SG-100	
Color	Light green	Green	
Size	W1.0m×L10m×t2.0mm	W1.0m×L10m×t2.0mm	
Conductivity	10 ⁶ ≤R≤10 ⁷ Ω	10 ⁶ ≤R≤10 ⁷ Ω	
Weight	35kg/roll	35kg/roll	
Material	NBR+SBR	NBR+SBR	

●For safety purposes, read the instruction manual carefully before using the unit. ●Do not use this product in an explosion-proof area. ●A high voltage is applied on this product. Make sure that water, oil, solvents, etc., do not come in contact. ●Avoid dew condensation as it can result in electric shock or product damage.

●Keep away metal objects such as tools or needles, or body parts such as fingers, hands or face from the needle electrode because a high voltage is applied on the needle electrode.

Manufactured by

VESSEL CO., INC.

17-25, Fukae-Kita 2-chome,
Higashinari-ku, Osaka 537-0001 Japan
Tel : +81 6 6976 7778 Fax : +81 6 6972 9441
E-mail : export@vessel.co.jp
URL : http://www.vessel.co.jp/english/

●For improvements, the product specifications, size, price and other information may be subject to change without prior notice.

Distributed by

Printed in Japan

14120100.00