

New

Improve efficiency in mold exchange or repair work

Made-to-order item

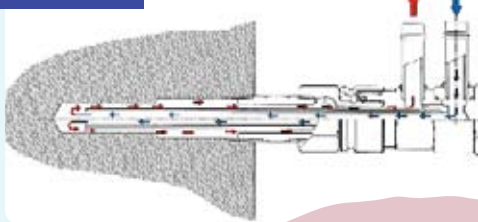
Couplings used in spot cooling system of die-casting dies.



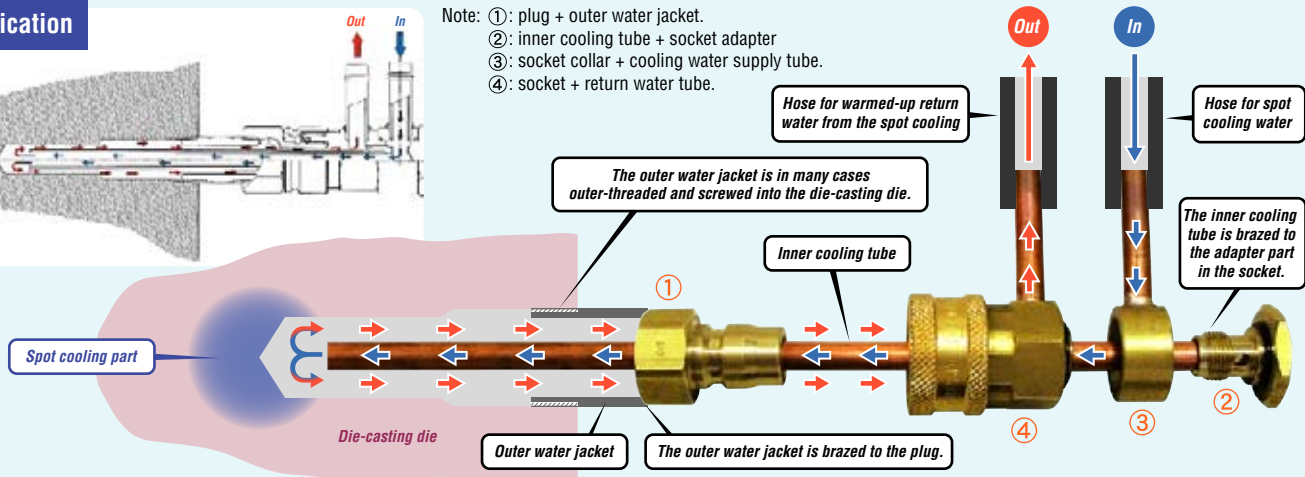
Quick-connect design serves for improved efficiency in mold exchange or repair work.

Simple spot cooling water supply system is established by using our special pipe-in-pipe TSW / TP Couplas that penetrates deep into the die-casting die as indicated in the below illustration. Cool water runs through inside the inner cooling tube and reaches to the spot cooling part located inside of the die-casting die and absorb the heat from the portion. The heated-up water comes back through outside of the inner cooling tube and inside of the outer water jacket. Outer water jacket is brazed to the plug ① and inner cooling tube is brazed to the socket adapter ②. Thus easy uncoupling of socket (② + ③ + ④) from plug ① will let you take out the inner cooling tube from the die quickly. Now you can really talk about efficient die-casting die setup and maintenance.

Application



- Note: ①: plug + outer water jacket.
 ②: inner cooling tube + socket adapter
 ③: socket collar + cooling water supply tube.
 ④: socket + return water tube.



Specifications

Body material	Brass		
Applicable fluid	Water, Hot water		
Working pressure	0.5MPa {5kgf/cm ² }		
Sealing material	Sealing material	Mark	Working temperature range
	Fluoro rubber	FKM (X-100)	

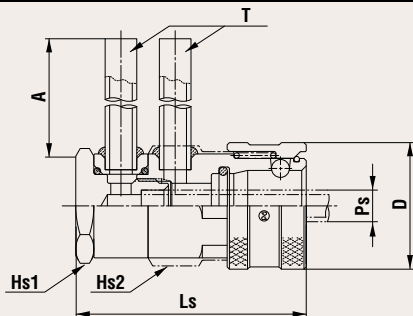
*1) Possible working temperature range may vary by each application.

Note: When parts of complicated shapes such as those for cars are made by die casting machines, supplementary spot cooling may be required. You can adopt our special couplings exclusively for mold spot cooling water. But since this line of products are made-to-order items, please consult in details with your Nitto Coupla supplier to determine proper design of your system before place an order.

Models and Dimensions

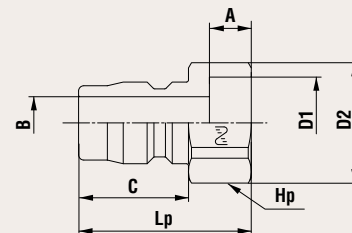
WAF : WAF stands for width across flats.

Socket



Model	Dimensions (mm)						
	Ls	øD	Hs1 (WAF)	Hs2 (WAF)	øT	A	øPs
2TSW-2LR-6	44.5	20	Hex.18	Hex.18	6	97	6
3TSW-2LR-7	51	28	Hex.22	Hex.23	7	100	7

Plug



Model	Dimensions (mm)						
	Lp	C	øB	Hp (WAF)	øD1	øD2	A
2TP-14W	25.5	15	8	Hex.18	14	20	8
3TP-17.5W	33	21	10	Hex.21	17.5	23	8

New

Small mold Cupla MK Series for piping of cooling water for die cast molds

Made-to-order item

Coupling for cooling water line connection. Compact yet with high flow!

For piping of cooling water for die-casting die

Small mold Cupla MK Series

Comparison with Nitto's model 1TSH

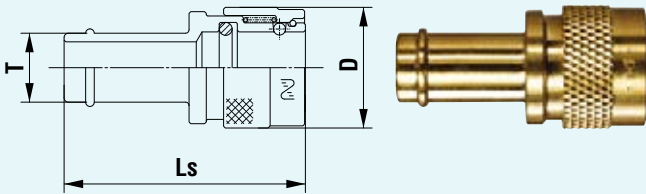
- O.D. 17.5 → O.D. 14.0mm → **▲ 20%**
- I.D. 3 → I.D. 6mm → **→ +200%**

The outside diameter of our socket and your hose are almost the same, and the chances of unexpected disconnection is greatly reduced.

Models and Dimensions

WAF : WAF stands for width across flats.

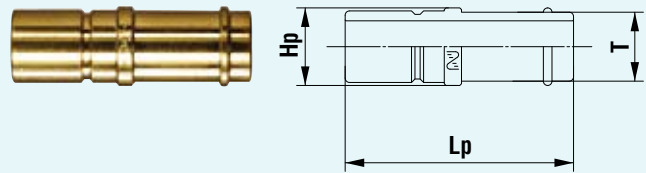
Socket SH type



Model	Application (Hose)	Dimensions (mm)		
		Ls	øD	øT
MK-6SH	I.D. 6mm	28.5	14.0	6.0
MK-8SH	I.D. 8mm	28.0	14.0	8.0

• Model MK-6SH : Made-to-order item • Model MK-8SH : off the shelf

Plug PH type



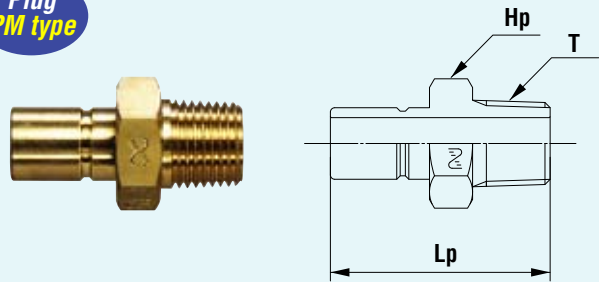
Model	Application (Hose)	Dimensions (mm)		
		Lp	øHp	øT
MK-6PH	I.D. 6mm	27.5	9.0	6.0
MK-8PH	I.D. 8mm	26.5	9.0	8.0

• Model MK-6PH : Made-to-order item • Model MK-8PH : off the shelf

MOLD CUPLA MK Series



Plug PM type



Model	Application	Dimensions (mm)		
		Lp	Hp (WAF)	T
MK-01PM	Rc 1/8	25.5	Hex. 13	R 1/8

• Model MK-01PM : off the shelf

Specifications

Body material	Brass			
Size	R 1/8, Inside diameter of cooling water hose : 6mm • 8mm			
Working pressure	1.0MPa {10kgf/cm ² }			
Pressure resistance *1	1.5MPa {15kgf/cm ² }			
Working temperature range of sealing material *2	Sealing material	Mark	Max. working temperature	Working temperature
	Nitrile rubber	NBR (SG)	+60°C	RT °C

*1) The max. pressure limit that does not affect the performances. Continuous operation is not permitted.
*2) Possible working temperature range may vary by each application.

★ Specifications and designs are subject to change at any time without notice.



ISO 14001
JQA-EM4057
NITTO KOHKI Co., LTD.
Headquarters
Research Center



ISO 9001
JQA-2042
NITTO KOHKI Co., LTD.
Machine Tools Division



NITTO
NITTO KOHKI CO., LTD.

Head Office

9-4, Nakaikogami 2-chome,
Ohta-ku, Tokyo 146-8555 Japan
Phone : +81-3-3755-1111 Fax : +81-3-3753-8791

- ▶ E-mail : overseas@nitto-kohki.co.jp
- ▶ URL : <http://www.nitto-kohki.co.jp>

DISTRIBUTED BY